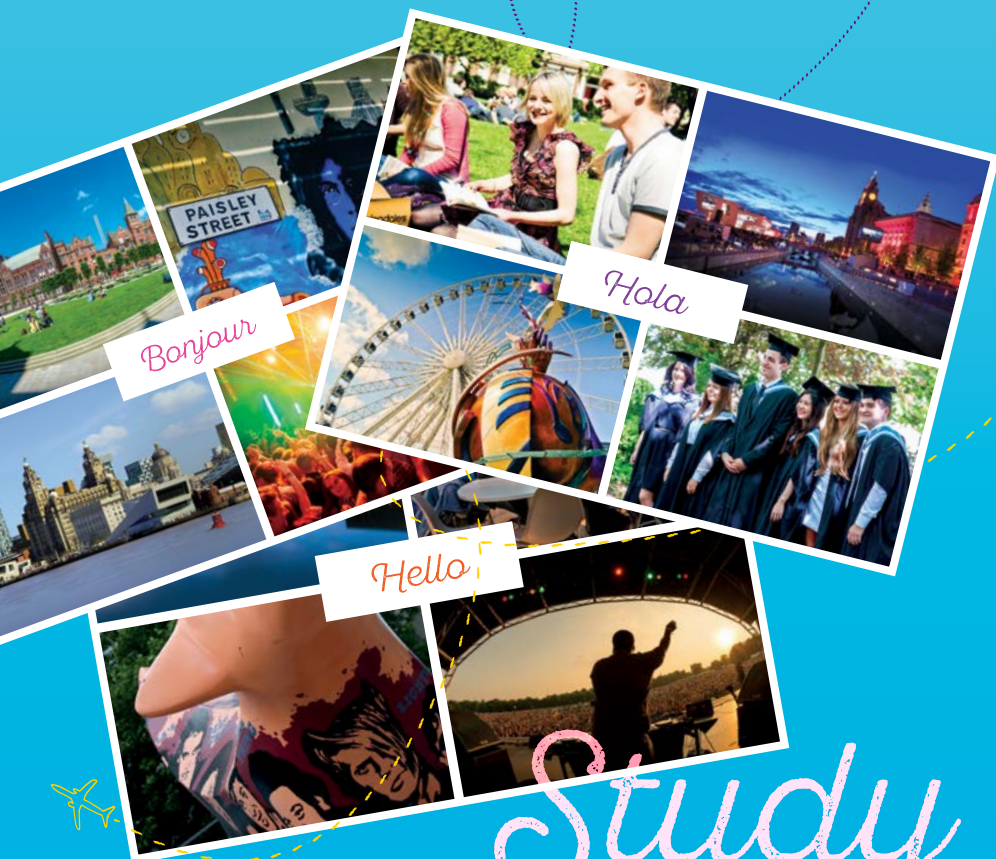




UNIVERSITY OF
LIVERPOOL



Study ABROAD

at the University of Liverpool

Welcome



For
advancement
of *learning* and
ennoblement
of *life*

At the University of Liverpool we believe in offering all our students the opportunity to become global citizens through interactions with a variety of different cultures and peoples. Our Inbound Study Abroad students help us create a truly international student body on campus and I am delighted that you are considering the University of Liverpool as your Study Abroad choice. We hope this guide will give you an insight into our wonderful University and the historic and dynamic city of Liverpool, and also provide the information you need to make one of the most exciting decisions of your academic career. We look forward to welcoming you into our vibrant Liverpool student community.

Professor Janet Beer
Vice-Chancellor

THE UNIVERSITY OF LIVERPOOL	02
THE CITY OF LIVERPOOL	04
LIFE ON CAMPUS	08
STUDY ABROAD OPPORTUNITIES	10
WHAT CAN I STUDY?	12
YOUR SUPPORT NETWORK	14
ACCOMMODATION	18
MONEY MATTERS	20
TERM DATES	21
HOW TO APPLY	22
SUMMER SCHOOL	23
CONTACT US	24
UK MAP	25

Photography: Mark McNulty, McCoy Wynne, The Roundhouse. Various front cover images, pages 04-07, used under Creative Commons from; Andy Miah, Ian Carroll, Beverley Goodwin, Roberto Taddeo, Alison Benbow, Calfieroor's, Rebecca Boardman, Pete and Sue Adair.

Contents

THE University OF LIVERPOOL

What an amazing experience studying abroad is! But it's not just about studies, it's about life, everything in and out of university. It's a great achievement moving to another city, in another country, discovering a new lifestyle, making new friends and improving my autonomy and self-confidence.

Geraldine Marten
University of Aix de Provence, France

Our History

Founded in 1881, the University of Liverpool is the original 'redbrick' university. We are one of the founding members of the prestigious Russell Group, comprising the top 24 research-intensive universities in the UK, and we rank in the top 200 universities worldwide for internationally recognised research. We are certain that with us you will have a world-class academic experience at an institution with a distinguished and proud history.

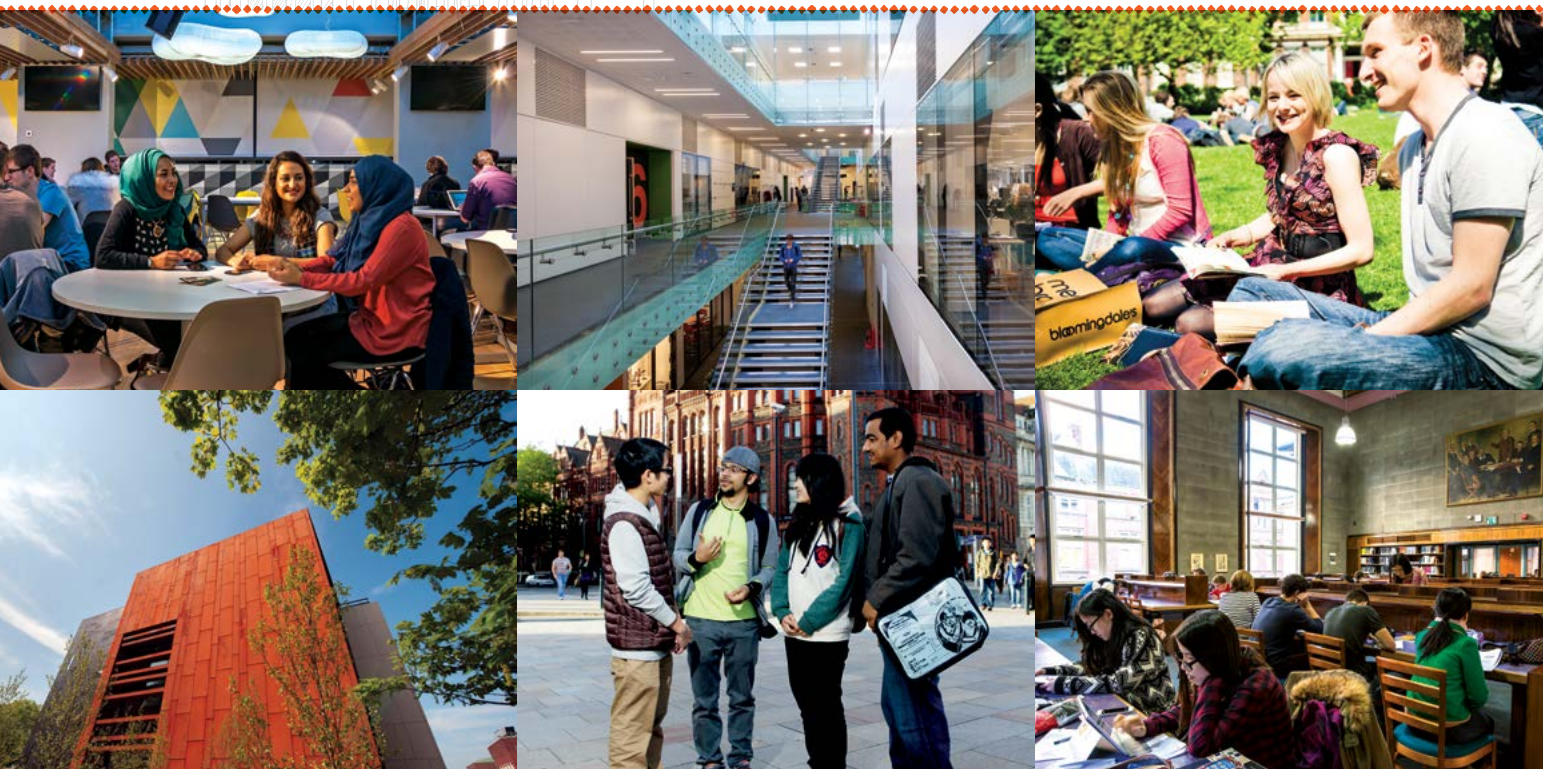
Our Expertise

The University of Liverpool is a world-class player in many areas of academia. In science and engineering, we were a key partner in the discoveries at the CERN reactor in Switzerland and some of the world leaders in chemistry are based at our University. We are home to one of the UK's top departments of archaeology, classics and egyptology, the only Institute of Irish studies outside of Ireland and an AACSB accredited Management School. Liverpool is at the forefront of innovative treatments and healthcare, including developing new drugs to tackle the Ebola virus, and treatments to create a personalised approach to healthcare.

Our Facilities

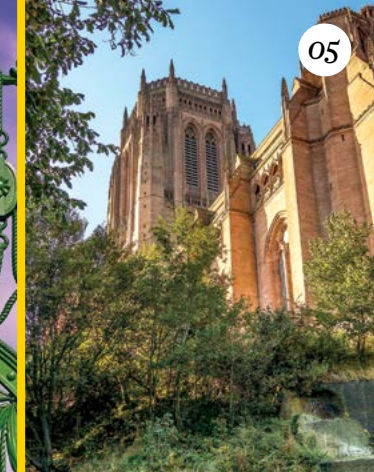
The University has two major libraries, the Sydney Jones and the Harold Cohen, which between them contain over 2.5 million resources. The libraries are open 24hrs during term time.

Our award-winning Central Teaching Laboratories offer cutting-edge learning opportunities for students who take classes in environmental sciences, physical sciences and archaeology. Students have access to over 2,000 PC's across campus, high speed Wi-Fi, virtual chat and project work support through our Virtual Interactive Teaching at Liverpool (VITAL).



RIO... SARAJEVO... LIVERPOOL...

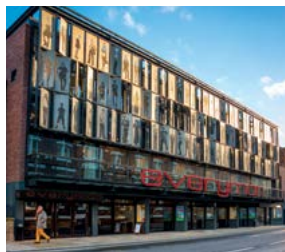
THE CITY OF LIVERPOOL WAS RANKED
3RD IN THE ROUGH GUIDES TOP 10
DESTINATION CITIES IN THE WORLD.
[WWW.ROUGHGUIDES.COM/
BEST-PLACES/2014/
TOP-10-CITIES](http://WWW.ROUGHGUIDES.COM/BEST-PLACES/2014/TOP-10-CITIES)





With more galleries and museums than any city outside London, Liverpool is an 'art-lovers' paradise; from old masters to modern masterpieces and cutting-edge film, photography and visual arts. Turn a corner in Liverpool and you will stumble across a theatre venue; the most renowned of which stage premieres by local and international writers, as well as hosting popular touring West End productions.

- Walker Art Gallery
- Tate Liverpool
- FACT
- Bluecoat
- Museum of Liverpool
- The Liverpool Slavery Museum
- Merseyside Maritime Museum
- Everyman
- Liverpool Playhouse
- Liverpool Empire
- Unity Theatre



Whether you prefer to see big names in stadium size venues or the newest unknown talent in underground clubs, Liverpool is the place to be. Classical music fans should not miss the world renowned Royal Liverpool Philharmonic Orchestra. Year-round Liverpool draws crowds to its internationally acclaimed music and cultural festivals. You can be sure Liverpool is always celebrating something.

- Echo Arena Liverpool
- Royal Liverpool Philharmonic
- Camp and Furnace
- Liverpool Guild of Students
- Liverpool Sound City
- Liverpool International Music Festival
- Africa Oyé
- Creamfields
- Brouhaha
- Brazilica
- Liverpool Pride
- Mersey River Festival



Liverpool is sport mad. Home to two of the Premiership's biggest football teams, both home grounds are a mile or so from the city centre. Aintree Racecourse is home to one of the highlights of the annual horse racing calendar; the Grand National. Locally there is county cricket, golf on "England's Golf Coast", Rugby League at St Helens and Widnes, and ample opportunities for water sports on the coastal outskirts of the city.

- Liverpool FC
- Everton FC
- Aintree Racecourse
- Liverpool Cricket Club
- Royal Birkdale
- Royal Liverpool Golf Club
- St Helens Rugby FC



Liverpool is a shopping destination to rival any city. Liverpool One houses 160 shops that are open late into the evening, along with restaurants and a multiplex cinema. Nearby, there is high-end and designer fashion at the Met Quarter and Cavern Walks and just a short walk from there you can find small, eclectic boutiques and quirky shops, in Bold Street, offering a range of styles from urban streetwear to vintage.

- Liverpool ONE
- Met Quarter
- Cavern Walks
- Grand Central
- Bold Street

Lonely Planet rated Bold Street as one of the best shopping streets in the UK. ↓



There is an incredible range of cafés, bistros and restaurants in Liverpool appealing to all tastes and budgets. There's hearty food to be had in the chilled out, bohemian surroundings of Hope Street or you could enjoy fine dining alongside breath-taking 360° views across the city from Panoramic 34.

- Chinatown
- Panoramic 34
- The Quarter
- Host
- Kimo's
- Neon Jamon
- Shipping Forecast
- Aloha
- Heebie Jeebies

With over 250 bars, pubs, clubs and student nights to pick from it's no surprise users of Trip Advisor voted Liverpool as Britain's Best Nightlife Destination.



In the south of the city you will find Sefton Park and Lark Lane, home to chilled-out bars, restaurants and an eclectic mix of independent shops. Or head to the north of the city to find Formby which offers an unspoilt stretch of National Trust coastline or Crosby Beach to see Antony Gormley's 'Another Place' an installation of 100 life-size statues. Liverpool is also within easy reach of the Lake District, North Wales and the Peak District.

- Sefton Park
- Calderstones Park
- Lark Lane
- Albert Dock
- Formby
- Crosby Beach
- Lake District
- Peak District
- North Wales



LIFE *on* Campus

We know that you expect an exciting student life when you choose your Study Abroad destination. Here at the University of Liverpool, we're confident that the experiences you have with us will be unrivalled.

LIVERPOOL GUILD OF STUDENTS

The Liverpool Guild of Students has been voted the best student union in the UK (2016) and for good reason! As soon as you join the University of Liverpool, you automatically become a member of the Guild of Students, your students' union, and have access to wonderful opportunities to try new things, enjoy sports and societies, and get involved with the student and local communities.

We believe you deserve the best. We offer:

Give it a Go! Our Give it a Go campaign offers a packed programme of activities and events for you to get involved in that will help you to explore Liverpool, the UK and British culture, with all activities at reduced prices.

Opportunities to boost your skills. We have over 200 student-run societies which you can get involved in, along with a wide range of volunteering projects and student-staff roles.

Support whenever you need us. Whether you need help to settle in or support during your studies, we're here for you. We're a friendly, helpful bunch and quick and easy to contact!

Campaigning for positive change. We are a democratic organisation and we listen to students to fight for the things which matter most to you. As our logo suggests, we fly the flag and provide effective representation for all students.

Find out more at www.liverpoolguild.org

Liverpool
Guild of
Students

SPORT LIVERPOOL

Whatever your sporting interests and ability there is something for everyone at Liverpool. Join one of our 51 student-led sport clubs or participate in sport at a recreational level. There are internal leagues in football, netball and hockey and the opportunity to play organised badminton, futsal, volleyball, table tennis and basketball.

Our **Sports and Fitness Centre** at the heart of campus offers a wide variety of facilities and services including a 25 metre swimming pool, squash courts, fitness suite, bouldering wall and dance studios. There are also daily group exercise classes for all levels of ability including Spinning, Pilates and HIIT. We also provide Les Mills BodyPump, BodyBalance and GRIT classes.

Off campus at our **Wyncote Sports Ground** we have 10 football pitches, four rugby pitches, one lacrosse pitch, floodlit hockey astro, football 3G pitch and 3G rugby training area.

Our
Guild has
recently had a
£14 million
redevelopment



ORIENTATION AND EVENTS

Of course, you'll also have the opportunity to get involved with activities arranged by the Study Abroad team, which will help you get to know your peers, the University and our city.

- **Orientation.** At the Study Abroad Orientation the team will talk you through the important information about studying in Liverpool and you will meet your peers.
- **Welcome and farewell events.** Twice a year we say 'hello' and 'see you soon' to our home and international students coming and going from Liverpool.
- **Study Abroad culture calendar.** These events, ticketed via the online store exclusively to Study Abroad students, are an opportunity to see Liverpool from a local's point of view! Join us for activities such as day trips, food tours and theatre trips, to make friends and learn a little more about our amazing city!
- **Global Connect.** During the semester look out for fortnightly Global Connect events where you can meet students from Liverpool going to study in your home country!



Study ABROAD

Opportunities at the University of Liverpool

We're proud to be part of a global network of universities facilitating the exchange of hundreds of students every year. We participate in the European Union-wide Erasmus+ scheme, as well as holding many exchange agreements with individual universities across the globe.

The opportunities available to you to study at the University of Liverpool depend on what type of partnership your university has with us:

- If your university is in Europe and has a partnership with us, then you can study here as an **Erasmus+ Exchange Student**
- If your university is outside of Europe and has an exchange agreement with us, you can study here as an **International Exchange Student**
- If your university doesn't have an exchange agreement with us, you can study here as a **Visiting Study Abroad Student**.

To help you understand what you can study with us, here are some useful explanations of common words you may see or hear:

- At the University of Liverpool a class/unit of study is known as a **'module'**
- A **'School'** is a group of subject areas (eg School of the Arts is made up of Architecture, Philosophy, Communication and Media, English and Music)
- **'Level'** refers to the year of study in which a UK student would normally take the module (eg Level 1 usually means first year). In general, Level 1 (ie first year) modules aren't open to Exchange or Visiting students.

Erasmus+ Exchange Students

Students from Erasmus+ partner universities must choose at least 50% of their modules from the subject area or subject areas listed on the bilateral agreement between the University of Liverpool and your home university. Check with your International Office which subject areas are covered by our agreement. Access to modules outside the listed subject area(s) is not guaranteed and is always at the discretion of the academic department offering the module.



International Exchange Students

As an International Exchange Student, you'll generally have a free choice in the subject areas that you study, as long as you have the appropriate background for your chosen module(s). We recommend that you select modules from one School and at one level in order to reduce the likelihood of timetable clashes. Students who wish to apply for modules from the Faculty of Humanities and Social Sciences only, can apply for modules in any Department/School in the faculty, as long as the modules are all of the same level.

Visiting Study Abroad Students

If your university doesn't have an agreement with us (see left) then you can still apply to study here as a Visiting Study Abroad Student. You will generally have the same free choice in subject areas and levels as International Exchange Students. Visiting Study Abroad Students pay tuition fees to the University of Liverpool which covers the cost of tuition and registration at the University (please note that some classes which involve field trips may incur extra costs). For the academic year 2017/18 the tuition fees are:

NON-EU/EEA National Semester-only: £6,825
EU/EEA National Semester-only: £4,500

NON-EU/EEA National Full Year: £12,495
EU/EEA National Full Year: £9,000

Students who want to study as a Visiting Study Abroad Student also have the option of applying through one of our approved Overseas Representatives (agents), who will be able to provide you with tailored advice and support. To find our Overseas Representatives in your country see www.liverpool.ac.uk/study/international/countries/



I spent most of my time in Liverpool meeting the friendliest locals, exploring the beautiful countryside, and revising with my clever English classmates. Liverpool's hospitable environment, proud history, and perfect location in the British Isles make it the perfect place for every student looking to study abroad.

Jacob Woodbury
 Washington State University, USA



Top 18 UK University
targeted by global
graduate employers

9th

Architecture is 9th in the
UK for 4* and 3* research
(REF 2014)



Est. 1881

90%

of our Engineering graduates
who are in employment six
months after graduation have
a professional or managerial
job (Unistats)

WHAT CAN I Study?

AN INTRODUCTION TO OUR PROGRAMMES BY SUBJECT AREA

At the University of Liverpool you can choose from an extensive range of programmes to study in our dynamic, international research-led environment. Erasmus+ students should select at least 50% of their modules from the subject area listed on the agreement between Liverpool and their home university; consult your Study Abroad team for details.

Faculty of Health and Life Sciences

Institute of Life and Human Sciences

- School of Life Sciences
 - Anatomy and Human Biology
 - Biochemistry
 - Bioveterinary Science
 - Genetics
 - Human Physiology
 - Microbiology
 - Pharmacology
 - Tropical Disease Biology
 - Zoology
- School of Psychology

Institute of Veterinary Sciences

Faculty of Humanities and Social Sciences

School of the Arts

- Architecture
- Communication and Media
- English

- Music

- Philosophy

School of Histories, Languages and Cultures

- Archaeology, Classics and Egyptology
- History
- Irish Studies
- Modern Languages and Cultures
- Politics

School of Law and Social Justice

- Law
- Sociology, Social Policy and Criminology

University of Liverpool Management School

- Accounting and Finance
- Business Economics
- Business Management
- Economics
- International Business
- Marketing

Faculty of Science and Engineering

School of Electrical Engineering, Electronics and Computer Science

- Computer Science
- Electrical Engineering and Electronics

School of Engineering

- Aerospace
- Architectural
- Civil
- Industrial Design

School of Environmental Sciences

- Earth, Ocean and Ecological Sciences
- Geography and Planning

School of Physical Sciences

- Chemistry
- Mathematical Sciences
- Physics

97%

of our English students find
their programme “intellectually
stimulating” (NSS 2016)



**Russell Group
Member**



1st

Chemistry is 1st in the
UK for 4* and 3* research
(REF 2014)



**Best Students'
Union 2016**



Your SUPPORT Network

Choosing to spend time on Study Abroad is a big decision and we know that having the correct support in place is very important to you. Whatever help you may need at any point in your student life here in Liverpool, we have a network of dedicated professionals to support you.

The Study Abroad team

Throughout your Study Abroad adventure with us, you'll be supported by our dedicated Study Abroad team. We will be your main central University contact throughout your experience, from your application to returning home.

Study Abroad buddies

All incoming students have the opportunity to be paired with a Liverpool student (a buddy) who has studied abroad themselves, to help you get to know our University and great city. You can request a buddy on your application form and they will contact you before you arrive in Liverpool.

Academic Study Abroad Co-ordinators/ Student Experience teams

Every subject area at the University has an Academic Study Abroad Co-ordinator. This is a lecturer based in the School(s)/ Department(s) that you will be studying in, who can assist you with any academic-related queries. There are Student Experience teams in every School who can assist you with queries regarding timetables, exams and any other administrative questions.

International Advice and Guidance team

If you have any queries relating to your visa, working during your studies, indeed anything related to being an international student our friendly team works with students, academic departments and our Liverpool Guild of Students to support you. www.liverpool.ac.uk/studentsupport/international

Health

Brownlow Health is a full general practice on campus offering medical services to students. You can contact Student Health on
T: +44 (0)151 285 4578/4784

Religion

There are places of worship for virtually all faiths in Liverpool and we can help you find them. Faith Express is the hub for all faiths on campus. E: faithexpress@liverpool.ac.uk

Counselling Service

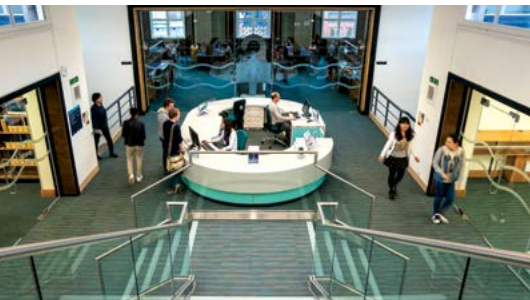
We understand that sometimes student life can be stressful and it can help to talk to a professional. Whilst you are with us you will have access to our Counselling Service. Our experienced counsellors offer professional, confidential support where you can talk about any issues that may be affecting your studies or general wellbeing.
www.liverpool.ac.uk/counserv

Childcare

There is a 68-place Children's Centre on campus, which also provides play schemes during the school holidays.
www.kidsinbloom.co.uk/portfolio/university-of-liverpool-nursery

Support for disabled students

We work closely with academic departments and students to ensure you can be supported as fully as possible. Every student has their own needs and we will work with you to establish a support system that works for you. If you would like to discuss your needs, please call T: +44 (0)151 795 8634 or email E: disteam@liverpool.ac.uk
www.liverpool.ac.uk/studentsupport/disability





ACCOMMODATION



Accommodation prices in the Study Abroad Village for 2017/18

Hall	Bed type	Cost per week	Cost for Semester One	Cost for Semester Two
Tudor Close	Single	£128.73	£2,427.48	£2,543.64
Tudor Close	Double	£134.89	£2,537.82	£2,659.26
Melville Grove	Single	£128.73	£2,427.48	£2,543.64
Melville Grove	Double	£134.89	£2,537.82	£2,659.26

The University has a range of accommodation options including the popular Study Abroad Village.

The Study Abroad Village (Tudor Close and Melville Grove) are open to both inbound exchange students and home students from Liverpool who have studied abroad. Additionally there are a range of accommodation options both on and off campus to choose from.

Students coming to study for a **Full Year** are guaranteed a place in any University of Liverpool hall of residence (not including the Study Abroad Village).

Students coming to study in **Semester One only** can apply for one of approximately 350 rooms in the Study Abroad Village – rooms are allocated on a first-come-first-serve basis.

Students coming to study in **Semester Two only** are guaranteed a room in on campus accommodation, where possible in the Study Abroad Village.

In all of our halls you are entering a supportive and safe environment, where our staff are experienced in maintaining a safe environment and helping you to feel at home. Within all our halls we also have a team of **Residential Advisers and Hall Student Committees**, that all play a part in meeting your needs and enhancing your complete experience of living in your student residence. It's part of their role to arrange social activities and help you get to know everybody living in your hall. It is often these initial friendships you make that stay with you throughout your time at university, and long after you've left.

We understand that student accommodation is about the whole experience and not just the room. The **Halls Student Experience teams** help to organise events and activities alongside Residential Advisers to meet student needs and enhance your experience of living in Liverpool.

MONEY Matters

Liverpool is the 4th largest city in the UK. Yet despite its global reputation for sport, music, architecture and a wealth of culture for you to explore, it is actually one of the most cost-effective, student friendly cities in the UK. Your actual living costs will vary according to your lifestyle, however a typical undergraduate exchange student, living in on campus accommodation estimates their monthly living costs as:

Expenditure	Cost
Accommodation	£510-£600
Food	£140
Mobile phone	£15
Leisure/entertainment	£80
Study costs (books/photocopying)	£10
Laundry	£20
Gym membership	£20
Total monthly costs	£795-£885



I have experienced a quality of student life that for me is perfection. The city of Liverpool is so charming, I enjoy its rich culture, history, pace of life and architectural beauty, there is never a dull moment. Even with all these wonderful things Liverpool is a really affordable place to live.

Jonathan Cheong
International Student from Singapore

Term DATES

Students from partner universities in the USA, Canada, Hong Kong and Singapore are able to sit Semester One Liverpool exams at their home university. All other students (and all students taking Semester Two exams) must be present at the University of Liverpool.

Academic Year 2017/18

Welcome Week		Monday 18 September to Friday 22 September
Semester One	Weeks 1-12	Monday 25 September to Friday 15 December
	Christmas Break	Monday 18 December to Friday 5 January
	Exams	Monday 8 January to Friday 26 January
	Semester Two Orientation	Sunday 28 January
Semester Two	Weeks 1-7	Monday 29 January to Friday 16 March
	Easter Break	Monday 19 March to Friday 6 April
	Weeks 8-12	Monday 9 April to Friday 11 May
	Exams	Monday 14 May to Friday 1 June

For future term dates, please see
www.liverpool.ac.uk/term-dates

How TO APPLY



In order to study on exchange at the University of Liverpool you must first speak to your International Office to be nominated by your home institution. Once nominated you will be able to complete the online application process.

The deadlines for applications are as follows:

- **Semester One and Full Year:** 15 May
- **Semester Two:** 15 November.

If your first language is not English you will also need to show that you have an appropriate English language qualification. For the full list of acceptable qualifications please see www.liverpool.ac.uk/study/international/apply/english-language/

EU Nationality students only: If you hold EU nationality you can provide a letter from your home university stating that your English level is equivalent to B2 on the Common European Framework.

For the latest application information, please visit our website www.liverpool.ac.uk/study/international/incomingexchange/incoming-applying/

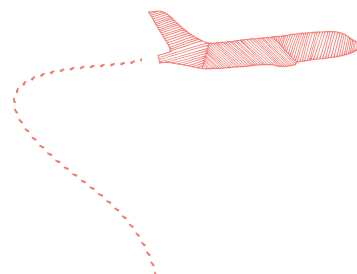
SUMMER School

If you'd like to get a taste of Liverpool before applying for Study Abroad or perhaps you just want a shorter Study Abroad experience, then you can apply for our International Summer School.

The Summer School has a choice of a three or six week option during the summer vacation, with a huge range of courses such as Business, Architecture and History. Students whose first language is not English can also choose to take weekly English classes.

The International Summer School also includes trips to other UK cities and social events and activities, including barbecues and fish and chip suppers.

To find out more about the International Summer School and to make an application, please visit www.liverpool.ac.uk/internationalsummerschool/. Students from exchange partner universities may be able to apply for tuition-free places on an exchange basis, check directly with your International Office to see if this applies to you.



CONTACT



(left to right) Aimee, Sally and Hannah from the Inbound Study Abroad team.

We hope that this guide has answered any initial questions you might have about the University and city of Liverpool and our Study Abroad opportunities, but if you have any queries, please don't hesitate to contact us:

E: saenq@liverpool.ac.uk

T: +44(0) 151 795 5508

www.liverpool.ac.uk/incomingexchange

**WE CAN'T WAIT
TO WELCOME
YOU TO
LIVERPOOL!**

The University of Liverpool Study Abroad team are here to help and offer guidance from start to finish on your Study Abroad journey. We have all had international experiences and know what a life changing opportunity it can be – we look forward to welcoming you!

Sally Gascoigne
Study Abroad Manager (Inbound)

UK Map



	Distance from Liverpool	
	Miles	Kilometers
Manchester	32	50
Leeds	65	105
Birmingham	80	126
York	95	140
Newcastle	125	200
Cardiff	135	215
Bristol	137	220
Belfast	145	233
Edinburgh	175	280
Glasgow	177	285
London	180	290
Plymouth	220	350



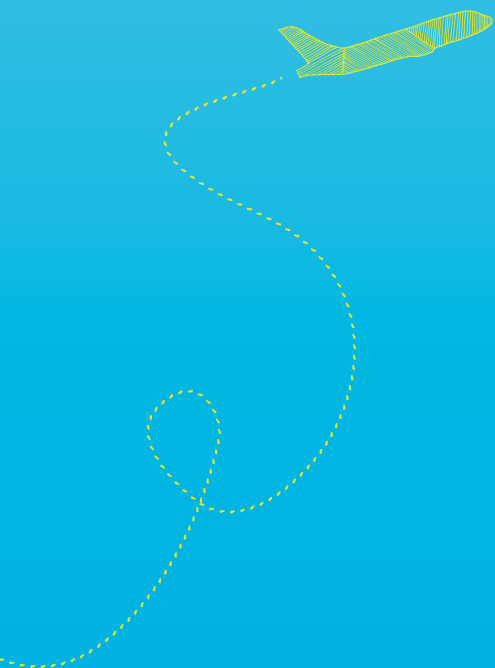
The University of Liverpool
Liverpool L69 7ZN
E: saenq@liverpool.ac.uk

www.liverpool.ac.uk/incomingexchange

 @livuniandabroad

 www.facebook.com/uolstudyabroad

 @uol_intl



Erasmus+

Changing Lives. Opening Minds.



This project has been funded with support from the European Commission.
This publication reflects the views only of the author, and the Commission
cannot be held responsible for any use which may be made of the
information contained therein.

THE UNIVERSITY IS A MEMBER OF THE ELITE
RUSSELL GROUP OF RESEARCH-LED UK UNIVERSITIES



PRODUCTION: EXTERNAL RELATIONS, MARKETING
AND COMMUNICATIONS Please recycle this document