



ESSEC GLOBAL BBA



CREATE YOUR OWN PATH

The pioneering spirit



ESSEC Business School, The Pioneering Spirit

CREATED IN 1907, ESSEC BUSINESS SCHOOL IS AN ACADEMIC INSTITUTION OF EXCELLENCE WHICH THROUGHOUT ITS HISTORY HAS BEEN CHARACTERIZED BY ITS PIONEERING SPIRIT.



**International
Rankings**
Business Education
2016

#3
Master of Science
in Management

#7
Master in Finance

#14
Executive Education
Programs

In both full-time education and executive education, **ESSEC proposes a wide range of programs** to all those wanting to obtain an extraordinary learning experience, strengthen their talent, express their leadership and become truly high-level managers.

A centennial institution with a wide network of academic and corporate partners throughout the world, ESSEC has opted to focus its strategic development on three principles: **innovation, involvement and internationalization** which compose the three axes of the ESSEC 3i strategy that will be implemented from here until 2020.

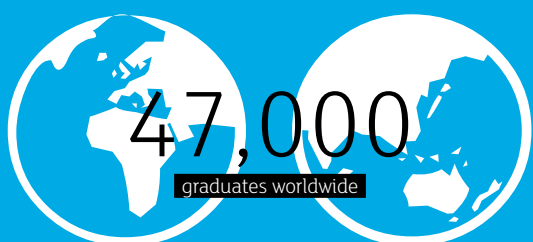
An institution nourished by research and committed to an ambitious development of alliances with leading institutions, **ESSEC constantly strives to bring its students face to face with cutting-edge knowledge at the crossroads of discipline and to provide them with the latest technologies.**

Hallmarked by a profound humanistic tradition, ESSEC has succeeded not only in making the link between business and society a major subject of research, but it is also one of the fundamental components in the training of responsible managers. ESSEC thereby affirms **the necessity of putting innovation, knowledge and the creation of value at the service of the wider community.**

With students coming from 96 different countries, a largely international faculty body and a campus in the Asia-Pacific region since 2005, **ESSEC is both an international and multicultural institution.** This internationalization has been strengthened by the building of a new campus in Singapore, a presence in Rabat, Morocco, and a soon-to-be-opened campus in Mauritius, as well as development projects in Africa and Latin America.

These three axes – innovation, involvement and internationalization – forge ESSEC's learning philosophy that is common to all its programs: **accompany our students throughout a learning journey aimed at opening them up to new, unthought-of opportunities.** Studying at ESSEC means creating your own path towards the future and joining a supportive community of 47,000 graduates worldwide!

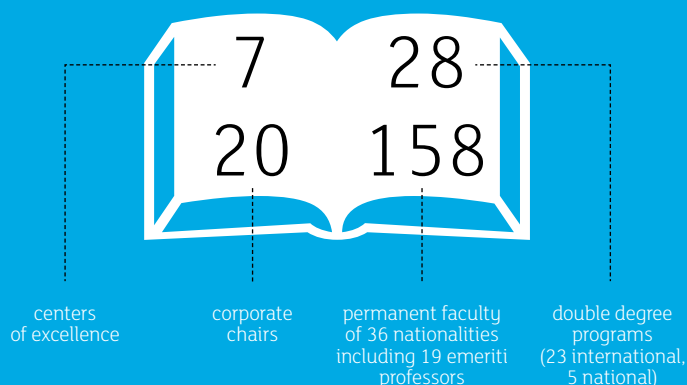
Welcome to ESSEC!



5 campuses in Cergy, Paris-La Défense, Singapore, Rabat and soon-to-be-opened in Mauritius

2,000 degrees awarded each year, including 1,600 at graduate level

182 partner universities in 45 countries



Message from the Dean



Since 1907, ESSEC Business School has been a pioneer in its commitment to meeting the challenges of an increasingly boundless, uncertain, and high-tech future. Today, that means offering students a unique learning experience: on the foundations of cutting-edge research, ESSEC blends academic study with practical experience while focusing on the importance of cross-cultural dialogue.

ESSEC gives its students the tools they will need to understand complexity, anticipate challenges, create value, and take the initiative in Europe, Asia, or wherever their careers may take them. Thanks to this skill set, ESSEC graduates embark on their careers prepared to lead and shape the strategic direction of some of the world's top firms and organizations.

As an exchange student in the ESSEC Global BBA Program - the #1 ranked program of its kind in France - , you will benefit from rich cross-cultural interactions and a multicultural learning environment where each participant contributes their unique insights and experience. You are choosing a world-class education combining cutting-edge knowledge and the life-changing experience of studying abroad. You will be joined by students from top-notch partner universities, and contribute to the intercultural richness and diversity which we value so highly at ESSEC.

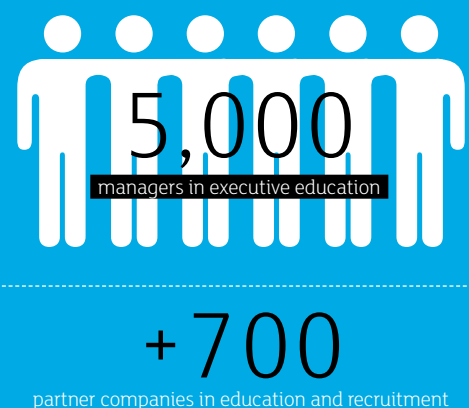
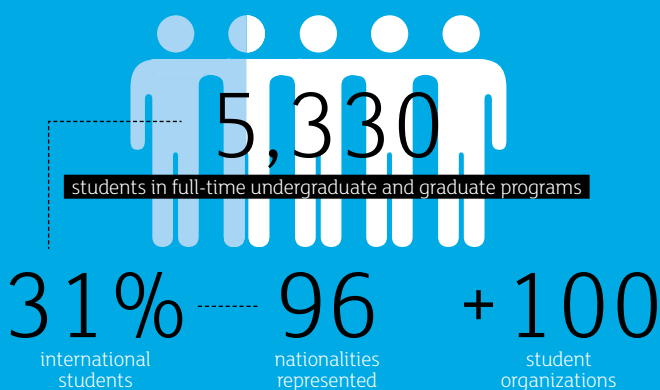
Our aim is that all our students acquire the skills of a well-rounded manager: the courage to take risks, the wisdom to see the big picture, and the foresight to plan for the future.

Does the ESSEC pioneering spirit inspire you?

Join ESSEC Global BBA as an exchange or Double Degree student.

Prof. Jean-Michel BLANQUER

Dean and President ESSEC Business School





Studying Business Administration at ESSEC

A life-changing experience



Message from Hugues Levecq:

ESSEC Global BBA welcomes around 350 exchange students from our 141 partner Institutions all over the world representing more than 41 different countries. International Students are a key component to giving our school a truly multicultural dimension. With the support and guidance of renowned professors, students are encouraged to open their minds and embrace new ways of thinking as they interact with our full-time BBA students. Our aim is to make sure students have not only the highest quality education but also have an amazing and enriching time at the school, so that at the end they leave hungry and enthusiastic to join the world of work.

Hugues LEVECQ

Dean, Global BBA

Ph.D. in Information Systems,

Stern School of Business, New York University

The Global BBA team:

- The Global Education Office (GEO) is responsible for the enrollment and arrival of the exchange students to and from ESSEC.
- Our Program Management Office (PMO) is in charge of the Academic enrollment of all BBA students.
- Upon arrival in the fall, our Welcome Center is here to deliver our student's welcome kit (student card...) and to assist them concerning accommodation and other day to day matters.

ESSEC Global BBA France Rankings



ESSEC BUSINESS SCHOOL: INTERNATIONAL EXCELLENCE

- World class academic education.
- First Business School outside North America to get AACSB accreditation in 1997.
- Received EQUIS accreditation in 2003.
- European roots: Alternative views on world's growing complexity.
- Wide variety of International Programs: Master of Science in Management, MBA In international Luxury Brand Management, MBA in Hospitality Management, Global MBA, Advanced Master's, Ph.D.

** Member of the International Business Education Alliance Program*

ESSEC Global BBA's Learning Goals

The program teaches students to:

MANAGE PROCESS

- Understand and know how to use corporate accounting documents
- Master corporate financial decisions
- Know how to put into place management control tools
- Master the marketing function
- Understand the role that information systems play in a company
- Understand the place and principles of human resources, logistics, purchasing and the legal services

FACE COMPLEXITY

- Be capable of using and analyzing figures in complex situations
- Be able to identify pertinent data and use the appropriate tools in order to understand complex internal situations and contribute to change
- Know how to use tools necessary to understand corporate strategic situations in national and international contexts
- Be capable of developing a business plan

RISE TO LEADERSHIP

- Master software that allows them to prepare effective oral and written presentations
- Know how to use the appropriate techniques to resolve conflicts and find solutions
- Be capable of working effectively in environments that incorporate a high degree of diversity and cultural differences

INTEGRATE SOCIETAL CONTEXT OF BUSINESS

- Have a global perspective of the world in which companies function
- Have understanding of cultural differences and the diverse ways that companies function
- Understand the corporate internal and external environment
- Integrate the legal institutional contexts



"ESSEC is giving me a unique experience of culture and university life. With such a wide variety of activities and people, there is so much to do and learn. It has steepened my learning curve and has given me an opportunity to live like a Parisian as well as learn from people from different parts of the world".

Raghvendra, current student





Structure of the Global BBA Program

The Global BBA program

		FULL-TIME BBA STUDENTS
		ALL CAMPUSES
1 st YEAR	Sem1	Geopolitics/Financial Accounting 1/Introduction to Legal Questions/Managerial Economics/Excel/Financial Mathematics/Productive Behavior/Marketing 1
	Semester 2	Financial Accounting 2/European Institutional and Material Law/Macroeconomics/Visual Basic for Applications/Statistics/Introduction to entrepreneurship/Marketing 2/Kallystée Game
	Professional experience	3 month operational internship
2 nd YEAR	Semesters 3 and 4	ALL CAMPUSES (with some regional-specific courses) Costs & Budgets: introduction & practices/European Competition Law/Competition Economics/Corporate Finance 1/Marketing Studies/International Mobility (seminar)/Operational internship defense/Field Experience Seminar
	Professional experience	4 weeks internship in a social, humanitarian or educational environment

Exchange and Double Degree students join BBA students for Semesters 5 (Fall) and 8 (Spring)

		INTERNATIONAL EXCHANGE STUDENTS*	FULL-TIME BBA STUDENTS		
			STANDARD TRACK	DOUBLE DEGREE/ 1 YEAR EXCHANGE TRACK	APPRENTICESHIP TRACK
3 rd YEAR	Semester 5 (Fall)	✓	Courses Cergy Campus (see opposite page)		
	Semester 6		International exchange or internship (6 months) Managerial experience	Internship (6 months) Managerial experience	1 st period in Company
4 th YEAR	Semester 7		Internship (6 months) Managerial experience or international exchange	International exchange	International exchange
	Semester 8 (Spring)	✓	Courses Cergy Campus (see opposite page)		2 nd period in Company
	Semester 9		Courses Cergy Campus		

* exchange to Cergy campus only at present

Courses available to Exchange Students

Third and fourth year courses

Fall semester courses (subject to modification)

Course title	ECTS	Semester
I-Xperience Week / Build your own course	0	English & French
Ariane (Business Simulation Game)	1	English & French
International Marketing	4	English & French
Management of Organisations	4	English & French
Principles of Finance	4	English & French
Research Methods	1	English & French
Anthropologie et Société	2	French
Doing Business in Africa	2	English
Eastern Europe Today	2	English
Entreprises & Médias	2	French
Globalization and the city	2	English
Introduction to Business History	2	English
Le management du chef d'orchestre	2	French
Maîtrise de l'Information Stratégique	2	French
Religions & Society	2	English
World Religions : Introduction	2	English
Advanced Excel	4	English & French
Business Ethics / Ethique et Décision	4	English or French
Communication	4	English
Conjoncture et Politique Economique	4	French
Consolidated Accounts	4	English
Décision et enjeux géopolitiques internationaux	4	French
E-Business	4	English
Entrepreneuriat 2	6	French
Etre Leader & Manager / Introduction au Management d'Equipe	4	French
Financial Markets	4	English
Financial Statement Analysis	4	English
Gestion de la Supply Chain	4	French
Gestion de Portefeuille	4	French
Gestion des Ressources Humaines	4	French
Human Resources Management	4	English
Innovation & Design Thinking	6	French
International Cash Management	4	English
International Contract Law	4	English
International Economics	4	English
Leading & Managing	4	English
Lobbying : cadre, outils et stratégie	4	French
Marketing B to B	4	French
Marketing Clients	4	French
Merger and Acquisition and Private Equity	4	English
Operations Management	4	English & French
Publicité et Communication	4	French
Purchasing Management	4	English & French
RSE et développement durable	4	French
Salesforce Management	4	English & French
Strategic Management	4	English & French
Strategic Management Control	4	English & French
Strategy and Business Planning in Corporate Finance	4	English
Web Marketing	4	English
European Economics	4	English
French Civilization	4	English & French
Geopolitics	4	English
Intercultural Marketing	4	English
Union Européenne	4	French

Spring semester courses (subject to modification)

Course title	ECTS	Semester
International Negotiation	2	English and French
Strategic Management	4	English and French
Strategic Management Control	4	English and French
Art et création de valeur	2	French
Enjeux d'une région émergente : l'Amérique Latine	2	French
Globalization and Trade	2	English
Law & Economics	2	English
Le management du chef d'orchestre	2	French
Mondialisation et diversité	2	French
Religions & Society	2	English
B to B Marketing	4	English
Conjoncture et Politique Economique	4	French
Créer et gérer un événement	4	French
Décision et enjeux géopolitiques internationaux	4	French
E-Business	4	English
Entrepreneurship 2	6	English
Excel Avancé	4	French
Financial Markets	4	English
Financial Statement Analysis	4	English
Human Resource Management	4	English
International Cash Management	4	English
International Contract Law	4	English
International Trade	4	English
Introduction au Management d'Equipe	2	French
Management des forces de vente	4	French
Marketing Clients	4	French
Merger and Acquisition and Private Equity	4	English
Portfolio Management	4	English
Publicité et Communication	4	French
Purchasing Management	4	English
Sustainable Development	4	English
Web Marketing	4	English
Civilisation française et Europe	4	French
European Economics	4	English
French Civilization	4	English
Geopolitics	4	English
Intercultural Marketing	4	English
International Marketing	4	English
Management of Organisations	4	English

Language classes

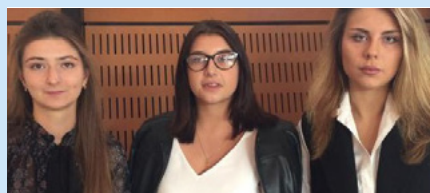
Course title	ECTS	Semester
French language beginner level	4	Fall + Spring
Advanced/Intermediate Business French	4	Fall + Spring
Advanced English Language, Issues and Culture	4	Fall + Spring
English for Communication, Careers and Culture (advanced level)	4	Fall + Spring
Spanish - Beginner level	4	Fall only
Spanish - False beginner level	4	Spring only

International Exchange Students

Who can apply?

Exchange Students Global BBA program:

At ESSEC Global BBA we welcome international exchange students who are nominated by our partner universities. Please check our International Partners list on our new website for international partners and exchange students <https://sites.google.com/a/essec.edu/bba-incoming-international-exchange/> to see if you are eligible to enrol.



"The choice of France was actually evident for us. To get a Double Degree in France is a prosper opportunity for us: we like the language, the country, the people and obviously

ESSEC as is one of the best Business Schools in the country. This partnership between both Universities is very significant for us as it gives us the opportunity to obtain both Russian and French Diplomas and to try to develop ourselves in other European Countries as well".

Anna ANTONOVA, Yana RUTKOVSKAYA & Julia IVANOVA
Double Degree students, Plekhanov Russian University of Economics.



"I chose ESSEC because I know it is a really good University. I know a few students who came and were super happy about their choice and have to say I totally agree with them! I decided to come for a year because I really wanted to go deep into this experience for myself, so when I had the choice to do it, I just wanted to take advantage of it".

Julia VALVERDE RIVERO AGÜI – Full-year Exchange student – ESIC, Spain.

Type of exchanges

Double Degree Program French or English track

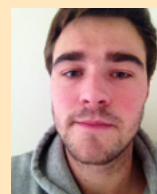
- ▶ The first 2 years of study at the partner home institution.
- ▶ One full year (2 semesters = 60 ECTS credits) of study at ESSEC Global BBA.
- ▶ A six month internship.
- ▶ In general, the final semester of study at the home institution.
- ▶ Final year dissertation.

Full Year Exchange

Full year exchange students can choose from the classes available during their chosen study period in accordance with the academic requirements of their home university.

One-Semester Exchange

Semester exchange students can choose from the classes available during their chosen study period in accordance with the academic requirements of their home university.



"I chose France, mainly because I love the Country. I've been here before and I just fell in love. I fell in love with the scenery, the people, the culture and the language. I've chosen the ESSEC Global

BBA because I heard so many good things about it. It has a great reputation and it's one of the Best Business Schools in the Country, so when I decided to come to France, ESSEC seemed like the most logical choice to me".

Luke IRELAND – One-Semester Exchange student - Victoria University of Wellington Business School, New Zealand.

BBA iMagination Week (Fall semester only):

This week is focused on imagination, creativity and transdisciplinary aims to accompany our students on making a change, imagining the possibilities and to put their experiences to use in terms of both know how and life skills.

It is a time for soul-searching and sharing. In our conferences, our students will hear testimonials from strong individuals with unique backgrounds and experiences. In other words, this seminar is designed to guide them in self-transformation, for them to be architects, in a very real way, of their very own cognitive map.

A Strong Link with Companies

Career Services For full-time Global BBA and Double Degree students

Three professional experiences to enhance the student's professional skills.

► 3-month Operational Internship

During the summer of their first year, students are immersed in a company for a three-month internship. They tend to complete assignments in the fields of international client relations, financial control and operational marketing.

► 1-month Social and Humanitarian Mission

Students undertake a one-month internship in a social, humanitarian or educational environment during the summer of their second year.

► 6-month Managerial Internship or 1 year Apprenticeship

In the final part of their studies, students complete either a six-month managerial internship or embark on an apprenticeship (2 x 6 month periods). This allows them to carry out a function with greater responsibilities and aims to help them define their career plan.

Double Degree students receive individual advice to help them find their mandatory six-month managerial internship.

Exchange students are invited to take part in Career fairs. They are also free to consult the Career Services database for internships. However the home institution will need to sign the work contract (convention de stage) which is required under French law.

A successful entry into the professional world

With a network of over 700 partner companies, individualized tutoring and a number of contacts with professionals, ESSEC Career Services give students the tools they need for rapid entry into the working world.



45% enter the job market or create their own company in various industry sectors.

55% choose to continue their studies at Master's level upon completion of the Global BBA program.

75% of all graduates work in an international environment.

Graduates earn an average annual salary of

€37,000

Among main recruiters :

ACCOR • AIRBUS • ALSTHOM • AXA • BAIN • BMW •
MICHELIN • NESTLE • PEUGEOT • SANOFI AVENTIS
• SOCIETE GENERALE • TOTAL • UNILEVER...

Where are they now?

- **Corinne Vigreux**, Class of 1987, Founder and CEO of Tom Tom (GPS System).
- **Alban Dechelotte**, Class of 2002, Country Manager, Havas Sports & Entertainment, Germany.
- **Jean-Christophe Jourde**, Class of 1990, Vice President, Estée Lauder Companies.
- **Emmanuel Perrin**, Class of 1991, President and CEO, Cartier North America.
- **David Rideau**, Class of 1998, Associate Director Cash Equities, HSBC Bank.
- **Caroline Cordier**, Class of 2003, Director of Marketing, DIOR Watches and Jewelry France/Switzerland/Belgium/Luxembourg.
- **Caroline Sisombat**, Class of 2000, Project Manager in Asia, L'Oreal.
- **Xavier Crepon**, Class of 1991, Associate, Pricewaterhouse Coopers Audit
- **Patrick Dalsace**, class of 1999, creator of La Fourchette
- **Nicolas Wolfovski**, class of 2009, creator of Les Nouveaux Ateliers

Global BBA International Partners

The ESSEC Global BBA has an international exchange network of over 141 partner universities worldwide (DD=Double Degree).

North America



Canada

- Concordia University - *Montreal, Quebec* **AACSB**
- Queen's University School of Business - *Kingston, Ontario* **AACSB EQUIS**
- Ted Rogers School of Business, Ryerson University - *Toronto, Ontario* **AACSB**
- Sauder School of Business, University of British Columbia - *Vancouver* **EQUIS**
- Schulich School of Business, York University - *Toronto, Ontario* **EQUIS**
- Haskayne School of Business, The University of Calgary - *Calgary, Alberta* **AACSB**
- The University of Victoria (UVic) School of Business - *Victoria, British Columbia* **AACSB EQUIS**
- Richard Ivey School of Business, The University of Western Ontario - *London, Ontario* **EQUIS**
- ESG, Université du Québec à Montréal - *Montreal* **EQUIS**
- Telfer School of Management, Ottawa University **AACSB EQUIS**
- Université Laval, Faculté des Sciences de l'Administration - *Québec* **AACSB EQUIS NEW 2016**

United States

- Tulane University, Freeman School of Business - *New Orleans, Louisiana* **AACSB**
- Emory University, Goizueta Business School - *Atlanta, Georgia* **AACSB**
- University of North Carolina, Kenan-Flagler Business School - *Chapel Hill N. Carolina* **AACSB**
- University of South Carolina (USC) - Darla Moore Business School - *Columbia* **AACSB**
- University of Richmond, Robins School of Business - *Richmond, Virginia* **AACSB**
- University of Michigan, Ross School of Business - *Ann Arbor* **AACSB**
- San Diego State University - *San Diego, California* **AACSB**
- University of Louisville College of Business - *Louisville, Kentucky* **AACSB**
- Rensselaer Polytechnic Institute, Lally School of Management, Troy **AACSB**
- George Washington University (GWU) - *Washington* **AACSB**
- Marquette University College of Business Administration - *Wisconsin* **AACSB**
- Iowa State University, College of Business - *Ames, Iowa* **AACSB**
- University of Northern Iowa - *Cedar Falls, Iowa* **AACSB**
- University of North Florida, Coggin College of Business - *Jacksonville, Florida* **AACSB**
- Florida Atlantic University **AACSB**

Latin America



Argentina

- Universidad Torcuato di Tella
- Universidad del CEMA (UCEMA) - *Buenos Aires*
- Universidad Austral - *Rosario*
- Universidad Austral - *Pilar*
- Universidad Argentina de la Empresa (UADE) - *Buenos Aires*

Brazil

- Pontifícia Universidade Católica (PUC) - *Rio de Janeiro*
- Pontifícia Universidade Católica (PUC) - *Curitiba*
- Fundação Gêtúlio Vargas (FGV) EBAPE - *Rio de Janeiro* **(NEW DD)**
- FGV EAESP - *São Paulo* **AACSB EQUIS NEW 2016**
- USP, School of Economics, Business and Accountancy - *São Paulo* **AACSB NEW 2016**

Chile

- Universidad de Chile, School of Economics and Business - *Santiago* **AACSB**
- Universidad Adolfo Ibáñez - *Viña del Mar* **AACSB EQUIS NEW 2016**

Colombia

- Universidad de Los Andes, School of Management - *Bogotá* **AACSB EQUIS**

Mexico

- Tecnológico de Monterrey - *Cuernavaca Campus*
- Tecnológico de Monterrey - *Guadalajara Campus*
- Instituto Tecnológico Autónomo de México (ITAM) - *México* **AACSB EQUIS**

Africa



Morocco

- AUI, Al-Akhwayan University - *Ifrane* **EPAS**

Asia



China & Hong Kong

- Fudan University, School of Management - *Shanghai* **AACSB EQUIS**
- Guanghua School of Business, Beida University - *Beijing (Peking)* **AACSB EQUIS**
- The University of Nanjing - *Nanjing (Nankin)*
- Tongji University - *Shanghai* **(DD) AACSB EQUIS**
- Tsinghua University - *Beijing (Peking)* **AACSB EQUIS**
- Xi'an Jiaotong University, School of Management (Shaanxi) **AACSB**
- Shanghai Jiao Tong University, Antai College **(NEW DD) AACSB EQUIS**
- The Hong Kong University of Science and Technology **AACSB**
- The University of Hong Kong (HKU) **AACSB**

India

- Symbiosis International University, *Pune*

Japan

- Keio University - *Tokyo* **AACSB EQUIS**
- Waseda University School of Commerce - *Tokyo*
- Hitotsubashi University - *Tokyo* **NEW 2016**
- Kobe University - *Kobe* **NEW 2016**

Malaysia

- Monash University **NEW 2016**

Singapore

- Singapore Management University **AACSB EQUIS**
- Nanyang Technological University **AACSB EQUIS**
- National University of Singapore **AACSB EQUIS**

South Korea

- Korea University Business School - *Seoul* **AACSB EQUIS**
- Seoul National University **AACSB**
- Yonsei University - *Seoul* **(NEW DD) AACSB EQUIS**

Taiwan

- National Taiwan University - *Taipei* **AACSB**

Thailand

- Chulalongkorn University - *Bangkok* **AACSB EQUIS**
- Mahidol University International College - *Bangkok* **NEW 2016**

Europe



Austria

- Wirtschaftsuniversität Wien, University of Economics and Business - *Vienna* **EQUIS**

Croatia

- Zagrebacka Škola ekonomije i managementa (Zagreb School of

Economics) - Zagreb **AACSB EPAS**

Czech Republic

- University of Economics , Prague (VSE) **EPAS**

Denmark

- Copenhagen Business School - Copenhagen **AACSB EQUIS**

Finland

- Aalto University - Helsinki **AACSB EQUIS**

- Turku School of Economics - Turku

Germany

- Universität Mannheim **AACSB EQUIS**

- WHU - Otto Beisheim, School of Management - Koblenz **AACSB EQUIS**

- Frankfurt School of Finance and Management **AACSB EQUIS**

- Pforzheim University **AACSB**

- Hochschule Regensburg, University of Applied Sciences

- Fachhochschule Dortmund **(DD)**

- Ludwig Maximilians Universität - München **NEW 2016**

Hungary

- Corvinus University of Budapest - Budapest

- International Business School - Budapest

Ireland

- Trinity College - Dublin

- University College Dublin, Quinn School of Business - Dublin **AACSB EQUIS**

Italy

- LUISS Guido Carli - Rome

- Università Commerciale Luigi Bocconi - Milan **AACSB EQUIS**

- Università degli studi di Firenze - Florence

- Università degli studi di Torino, School of Management, SAA - Turin

- Ca'Foscari University of Venice - Venice

Netherlands

- Rotterdam School of Management, Erasmus University **AACSB EQUIS**

- University of Groningen, FEB - Groningen **AACSB EQUIS**

- Erasmus School of Economics, Erasmus University

- Hogeschool van Amsterdam, School of Economics and Management

- IBS Hanzehogeschool Groningen, Hanze University Groningen

- University of Maastricht **AACSB EQUIS**

Norway

- BI Norwegian School of Management - Oslo **AACSB EQUIS**

- Norwegian School of Economics & Business Administration (NHH) - Bergen **EQUIS**

Poland

- Szkoła Główna Handlowa w Warszawie (SGH, Warsaw School of Economics)

Portugal

- Universidade Nova de Lisboa - Lisbon **AACSB EQUIS**

- Universidade Católica Portuguesa - Lisbon **AACSB**

Russia

- Plekhanov Russian University of Economics - Moscow **(DD)**

- Higher School of Economics - Moscow and St Petersburg

Slovenia

- Univerza Ljubljani Ekonomska Fakulteta, University of Ljubljana, Faculty of Economics - Ljubljana **AACSB EQUIS**

Spain

- Escola Superior de comerç Internacional (ESCI) - Universitat Pompeu Fabra - Barcelona

- Escuela Superior de Gestión Comercial y Marketing (ESIC) - Madrid **(DD)**

- IE Business School - Madrid **AACSB EQUIS**

- IQS - Universitat Ramon Llull - Barcelona **AACSB**

- Universidad de Salamanca - Salamanca

- Universidad Pontificia Comillas, ICADE - Madrid

- Universidad de Navarra, School of Economics and Business Administration - Pamplona **NEW 2016**

- Universidad Pública de Navarra - Pamplona

- Universidad Carlos III (UC3M) - Madrid

Sweden

- Höskolan i Jönköping, Jönköping International Business School (JIBS) - Jönköping **AACSB EQUIS EPAS**

- Linköpings Universitet, School of Management - Linköping

- Lunds Universitet - Lund **EQUIS**

- Stockholms Universitet - Stockholm

Switzerland

- University of St. Gallen (HSG) - St Gallen **AACSB EQUIS NEW 2016**

- University of Zurich - Zurich **AACSB EQUIS**

Turkey

- Koç Üniversitesi - Istanbul **EQUIS**

- Bogaziçi Üniversitesi, (Université du Bosphore), Faculty of Economics & Administrative Sciences - Istanbul

United Kingdom

- Cardiff University Business School - Cardiff, Wales

- City University, CASS Business School - London **AACSB EQUIS**

- King's College - London

- University of Warwick, WBS - Coventry **AACSB EQUIS NEW 2016**

- Newcastle University Business School - Newcastle **AACSB EQUIS**

- Royal Holloway College, University of London - Egham, Surrey

- University of Stirling - Stirling, Scotland

- University of Bath **EQUIS**

- University of Edinburgh Business School - Edinburgh, Scotland **AACSB EQUIS**

- University of Hull - Hull **AACSB EQUIS**

- University of Reading, Henley Business School - Reading **AACSB EQUIS**

- Sheffield Hallam University - Sheffield

Middle East



Israel

- IDC Herzliya Arison School of Business - Tel Aviv

Kuwait

- Kuwait University Business School **AACSB**

Lebanon

- ESA Business School - Beirut **(NEW DD)**

Oceania



Australia

- Monash University - Melbourne **EQUIS**

- The University of New South Wales - Sydney

- The University of Queensland - Brisbane **AACSB EQUIS**

- The University of Western Australia - Perth **AACSB EQUIS**

New Zealand

- Victoria University of Wellington Business School **AACSB EQUIS**

- University of Auckland **AACSB EQUIS**





ESSEC Global BBA Factsheet

SEMESTER INFORMATION

Fall semester

Alegessec housing check-in:

late August (all students)

Latest arrival date:

late August

Orientation Session*:

late August

Imagination Week*:

late August - early September

Classes:

September – December

Exams:

December (before Christmas break)

Earliest departure date:

21 December

Spring semester

Alegessec housing check-in:

late February

Latest arrival date:

late February

Orientation Session*:

late February

Classes:

February – May

Exams:

early June

Earliest departure date:

10 June

**compulsory attendance*

Course information

Catalogue and syllabi available on the website: <https://sites.google.com/a/essec.edu/bba-incoming-international-exchange/academic-info>

Transcripts are sent to home university coordinators usually within 6 weeks after the official end of the semester. Please note that we do not convert our grades for international universities. Each partner university will convert the grades obtained by its students according to its own criteria. A detailed explanation of ESSEC Global BBA's grading system is sent systematically to the home university with the transcripts.

Re-sit exams: No re-sits or make-up exams are available to students.

Housing, health, visa and budget

Near-campus housing with Alegessec is available, and priority is given to international students if they apply by the stipulated deadline.

Alegessec (ESSEC housing department) offers 1,095 studios across four residences in Cergy only 35 minutes from Paris. Discover a student life rich in cultural exchanges – over 50% are international students – and the pleasure of living near your campus and comrades.

For more information, please check the website:

<http://www.essec.edu/en/pages/about-essec/essec-business-school/housing/>

Medical cover

International students who enrol in a French educational institution are obliged by the French government to enrol in the French Social Security Healthcare system. Enrolment costs around **218€** (amount revised annually) to be paid online by credit card.

EU students are exempted from that regulation but must provide a copy of their European Health Insurance Card (EHIC).

Besides EHIC or Social Security, we recommend that students take out a private insurance that covers repatriation, hospitalization, personal liability, etc.

	EHIC	Enrolment in French Social Security system	Private Medical Insurance
EU citizens	compulsory	-	recommended
Non-EU citizens	-	compulsory	recommended

Visa & Residence Permit

EU students do not need to apply for a visa.

Non-EU students have to check with the French Embassy in their home country.

For more information, please check the website:

<https://sites.google.com/a/essec.edu/bba-incoming-international-exchange/practical-info-and-important-dates>

Budget estimation

Alegessec housing (single studio based) → 600€-800€ per month #

Social Security (if applicable) → approx. 218€ (once)

Medical cover → approx. 100€ per semester

Transportation → 70€ per month

Food / Groceries → 200€ per month

Personal expenses → 80€-100€ per month

Textbooks / School Supplies → 100€ per semester

before deduction of the APL housing subsidy

Application information

Online Nominations (partners)

Fall : late March - late April

Spring : October

Partner coordinators will be sent information by email nearer the time.

Online Applications (students)

Fall: May

Spring: November

Our application is completely online. Nominated students will receive information by email nearer the application period with procedure on how to submit their application form. Students need to upload the following supporting documents:

- ▶ ID page of passport (ID card accepted for EU citizens)
- ▶ Photograph – passport format
- ▶ IELTS (min. 6.0), TOEFL (min. 80 iBT), or equivalent certificate
- ▶ Official transcripts from home university (in English)



CONTACT INFORMATION

Institution name: ESSEC Business School

ESSEC Global BBA

3 avenue Bernard Hirsch - CS 50105
95021 CERGY-PONTOISE CEDEX
FRANCE

+33 (0)1 34 43 3000 (main switchboard)

www: <http://www.essec.edu/en/global-bba/>

www BBA Incoming Exchanges : <https://sites.google.com/a/essec.edu/bba-incoming-international-exchange/home>

► Dean, ESSEC Global BBA

Mr. Hugues LEVECO

► International Relations Manager

For enquiries from universities relating to the development and management of exchanges with ESSEC Global BBA

Ms. Tracey MOORE

tracey.moore@essec.edu

► Global Education Office (Incoming & Outgoing Students)

For enquiries from students and partners concerning forthcoming exchanges

Mrs Véronique FÉRÉ – Coordinator

Mrs Marjorie HAUGOU – Coordinator

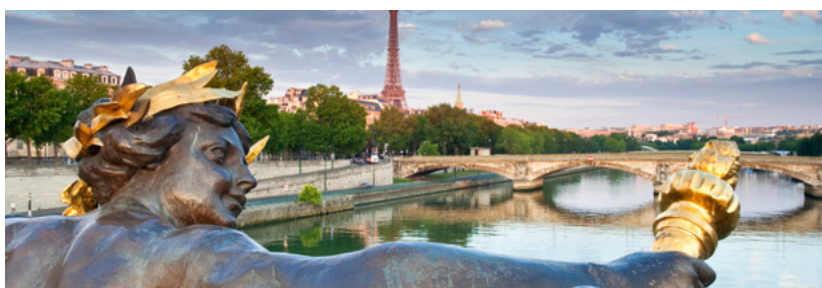
Ms. Valeria GOUPIL – Coordinator

Ms. Laurélise PERNET – Assistant

bba-globaleducation@essec.edu

+33 (0)1 34 43 3798 / 3297 / 3164 / 3158

Erasmus+ code: F CERGY 03



The ESSEC Experience:

more than just a learning environment

Student life

The goal of the ESSEC campuses is to provide students with an exceptional learning environment equipped with cutting-edge digital technology, while fostering a sense of community via student associations and promoting interactions with the business world. They offer all the facilities students need for their education and career development. Yet, as living on a campus is not only about attending classes, practical and leisure-time amenities such as a gym, a cafeteria, restaurants, ATMs and student residence halls are also available.

A true campus community

Students can add an extracurricular dimension to their ESSEC experience by getting involved in associations and participating in a true campus community marked by a spirit of sharing and multicultural diversity. ESSEC's 100 student associations cover a wide range of interests and opportunities, and convey strong values firmly anchored in the school culture: openness to the world, conviviality, mutual assistance, creativity and entrepreneurship.

Tools for learning and research

ESSEC offers its students a full range of digital tools to help them study, share and communicate more effectively, enhance their learning experience and facilitate their entry into the professional world. Expanded and renovated in 2008, ESSEC's 3,000 sq. m Learning Center is much more than a library, with thousands of books, academic journals, international newspapers, multimedia resources as well as rooms for collaborative work, Wi-Fi access and PCs available for students. An online learning portal, **www.myessec.com**, gives you access to all the information and tools you need for your education, including course syllabi, downloadable documents, videos, discussion forums, and an interactive space.

THE BDE AND MELT STUDENT SOCIETIES

These student societies aim to make international students feel at home from the outset. Before International students arrive, they create a group on Facebook so that new students can contact other international students, and they organise welcome activities during the orientation session and excursions and social events during their stay.

The BDE also arranges student 'buddy' partnerships to team up international students with their French counterparts.





The Cergy-Pontoise Campus



© Alexandre Delmas/Argento

Welcome to ESSEC Business School's original campus located only 35 minutes away from Paris.

ESSEC established its original campus in this student haven in 1973. Set in a vast green space covering 2,000 hectares, the campus features the very best teaching tools: auditoriums equipped with facilities, libraries rooted in the digital era, language labs, etc. It is also a convivial site with places to eat, student residences, sports facilities, practical services, and more.

The Paris-La Défense Campus



At the heart of Europe's leading business district, this ESSEC campus is adapted to the time constraints and targeted needs of working managers.

This campus, housed in the well-known CNIT building, is specifically dedicated to our executive education programs. Thanks to its strategic location, spaces for group work, connectivity, areas for relaxing, reading and getting together, it offers the perfect conditions for educating managers and executives.

The Singapore Campus



Midway between India and China, Singapore boasts the ideal location to get a global vision of Asia.

Singapore has always been in the vanguard of Asian development and continues to attract multinationals from all over the world. Since 2005, ESSEC's third campus has been ushering its students into the heart of a major economic, commercial and financial crossroads, offering an ideal platform for understanding the forces, complexity, diversity and challenges of a key region in the 21st century. In January 2015, ESSEC welcomed students to its new 6500 m² campus.

The Rabat campus (Morocco)



© Core Studio Architects

Baptised ESSEC Africa-Atlantic and launched in 2016, this new campus is located in the municipality of Sidi Bouknadel in the heart of the Rabat-Salé urban area. It hosts ESSEC's academic activities, notably a track from the Global BBA program, and those directed in partnership with the Ecole Centrale based in Casablanca and high-level Moroccan academic institutions such as the International University of Rabat.

The Mauritius campus



At the heart of the Indian Ocean and at the crossroads of 2 continents, Mauritius is undergoing rapid economic change and striving to become a hub for higher education in the Indian Ocean/southern Africa region.

Baptised ESSEC Africa-Indian Ocean, the ESSEC campus which will open its doors in September 2017 falls within the scope of this ambitious project. Located in Pierrefonds within the framework of a university complex combining several French higher education establishments, the campus will offer a privileged environment for studies and student exchange programs.

PARIS

ESSEC Business School

3 avenue Bernard-Hirsch - CS 50105 Cergy
95021 Cergy-Pontoise Cedex - France
Tel. +33 (0)1 34 43 30 00
www.essec.edu

ESSEC Executive Education

CNIT BP 230 - 92053 Paris-La Défense - France
Tel. +33 (0)1 46 92 49 00
www.executive-education.essec.edu

ESSEC Asia-Pacific

5 Nepal Park - Singapore 139408
Tel. +65 6884 9780
www.essec.edu/asia

ESSEC | CPE Registration number 200511927D - Period of registration: 30 June 2011 - 29 June 2017

SINGAPORE

ESSEC Africa-Atlantic

Plage des Nations - Sidi Bouknadel
Rabat-Salé - Maroc
Tel. +212 (0)5 30 10 40 19
www.essec.edu

ESSEC Africa-Indian Ocean

Royal Road, Pierrefonds
Mauritius
Tel. +230 401 2400
www.essec.edu / www.icsia.mu

The content of this brochure is intended for informational purpose only,
is subject to modification and is not legally binding.

MOROCCO

MAURITIUS



affilié à la

