

PRESENTATION OF SKEMA RESIDENCE

The University Residence has 185 apartments from studio to the T2, new and furnished with kitchen corner and bathroom :

- 172 for students (154 T1 and 18 T1Bis),
- 13 for active young people (5 T1 + 8 T2 – 4th and 5th floor).

Tariff 2017

	STUDIO	STUDIO T1 BIS	T2 Actifs
Surface	23sm	30sm	37 à 42sm
Rent - all charges included	428.98€	587,60€	663.42€ à 704.45€

*Included various services, furniture and equipment, and structural costs- electricity – water, insurance



FREE SERVICES

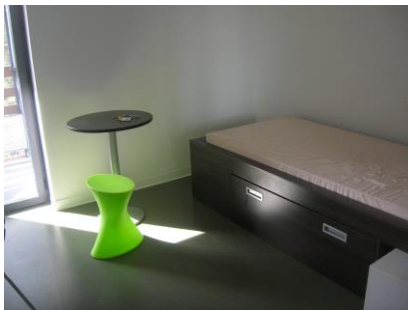
- outside free parking places behind the residence
- A team on site to help you for all your administrative or technical needs – from 8am to 6pm according to the days
- Free Intranet SKEMA Access with your confidential codecode – you need a cable

PAYING SERVICES

- A Laundry (3 washing and 2 drying machines) – with coins, notes and credit card operation
- Underground private places : 21.11€ for students, 35.18€ for working people
- WIFI – with WIFIRST provider- about 20€ per month

EQUIPMENT T1 T1BIS

➤ 1 Principal room/Living room, with :



- 1 round table + 1 stool
- 1 desk + 1 chair
- 1 bed of 100 X 200 (1 person) + 2 storage spaces integrated under the bed (drawers)
- 1 Bedside table
- 1 Cupboard with hanging,
- 1 Small additional wardrobe
- Bay Window
- Balcony or terrace

➤ 1 kitchen corner equipped, with :

- 1 sink, 2 hotplates, 1 hood, 1 refrigerator, 1 microwave, 2 cupboards down



➤ **1 bathroom, with :**

- 1 Sink with storage below, 1 mirror, 1 WC, 1 Shower



ELEMENTS NOT INCLUDED

The Residence does not provide:

- **Dishes : plates, glasses, pans,...**
- **Bed linen: Sheets pillows braids blankets**
- **Bed and Desk Lamp.**

During your stay, the replacement of lights bulbs and sanitary Equipment will be done for you but charged on the invoice.

RESOURCES MAXIMUM CRITERIA

2 main criterias to be accepted in the residence :

- to be a Skema student during the schoolyear, or having a contract (working or internship) during the summer period (April to August maximum)

- **to have annual income under the maximum below for social accomodation :**

Please, check if you fill in this condition before sending your request

Your income (or your parents ones) will be compared with :

- for french people paying their taxes in France : the line 25 of the “avis d'imposition 2016” on 2015 income
- for foreign people : an official document in English or French, indicating all the incomes of the student's family for year 2015 (Present Year - 2)

we also need to know the number of persons of the family living with these incomes,

EXEMPLE : a 4 people family (2 parents and 2 children) mustn't have an income over 37272€ in 2015 to be accepted in the residence in 2017.

Maximum income according to the type of the family

<u>Type of family</u>	<u>Maximum income</u>
1 person	20 123€
2 persons	26 872€
3 persons	32 316€
4 persons	39 013€
5 persons	45 895€
6 persons	51 723€
For each extra person	+ 5 769€

Types of families

<u>Definition of families</u>	
1	Single Person
2	Two adult persons,
3	3 persons or 1 single person with 1 person on load,
4	4 persons or 1 single person with 2 persons on load
5	5 persons or 1 single person with 3 persons on load
6	6 persons or 1 single person with 4 persons on load
Last type	Per extra person